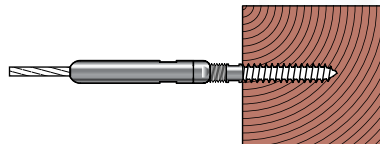
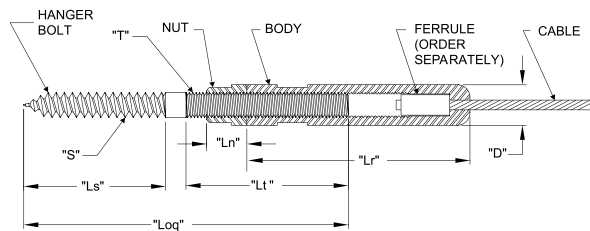


Adjust-A-Body® with Hanger Bolt Tensioner

This tensioner screws right into your wooden end post.

There is no need for special mounting hardware.



TYPE 316 STAINLESS STEEL

CABLE DIA.	PART NO.	*USE WITH FERRULE NO.	"S"	"T"	"Ls"	"Lt"	"Loq"	"Ln"	"Lr"	"D"	DRILL SIZE REQUIRED	MINIMUM NOMINAL TIMBER SIZE
1/8"	A-JB6	F-4	5/16"	5/16-24 L.H.	1.50"	2.00"	3.75"	.375"	2.75"	.500"	15/64"	4 X 4
3/16"	A-JB6	F-6	5/16"	5/16-24 L.H.	1.50"	2.00"	3.75"	.375"	2.75"	.500"	15/64"	
1/4"	A-JB8	F-8	7/16"	7/16-20 L.H.	2.00"	2.50"	4.75"	.500"	3.00"	.625"	5/16"	

*Order Ferrule Separately.

Adjust-A-Body® with Extended Length Hanger Bolt Tensioner

Same as the above tensioner, except the **hanger bolt is 3" long**, allowing you to penetrate deeper into the post or wall if necessary. Offered for use with 1/8" and 3/16" cable.



TYPE 316 STAINLESS STEEL

CABLE DIA.	PART NUMBER	*USE WITH FERRULE NO.	"S"	"T"	"Ls"	"Lt"	"Loq"	"Ln"	"Lr"	"D"	DRILL SIZE REQ.	MIN. NOMINAL TIMBER SIZE
1/8"	A-JB6-L	F-4	5/16"	5/16-24 L.H.	1.50"	2.00"	5.25"	.375"	2.75"	.500"	15/64"	4 x 4
3/16"		F-6										

*Order Ferrule Separately.

Hanger Bolt Driver
See page 28 in this catalog

