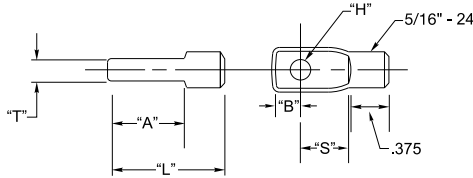


Mounting Aids



Invisiware Threaded Tab

Here's a real time and money-saver. The Invisiware threaded tab screws into a drilled and tapped hole on the inside wall of the end post for mounting an Adjust-A-Jaw or Adjust-A-Body tensioner, Ultra-tec Fixed Jaw, or Push-Lock fitting with threaded eye. **You save the expense of welding tees or tabs onto your end post.** Recommended only when you are using a minimum schedule 80 pipe end post or a square or rectangular steel end post with a minimum .250" wall.



TYPE 316 STAINLESS STEEL

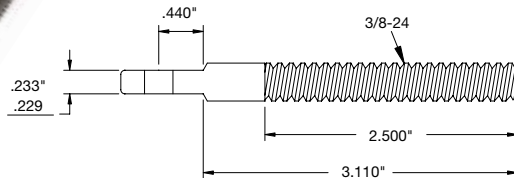
CABLE DIA.	PART NO.	"H"	"S"	"T"	"A"	"B"	"L"
1/8"	TT-6B	.265"	.500"	.233"/.229"	.813"	.313"	1.250"
3/16"	TT-6B	.265"	.500"	.233"/.229"	.813"	.313"	1.250"
1/4"	TT-8B	.390"	.625"	.295"/.285"	1.250"	.375"	1.625"
5/16"	TT-8B	.390"	.625"	.295"/.285"	1.250"	.375"	1.625"
3/8"	TT-8B	.390"	.625"	.295"/.285"	1.250"	.375"	1.625"

Mounting Aids



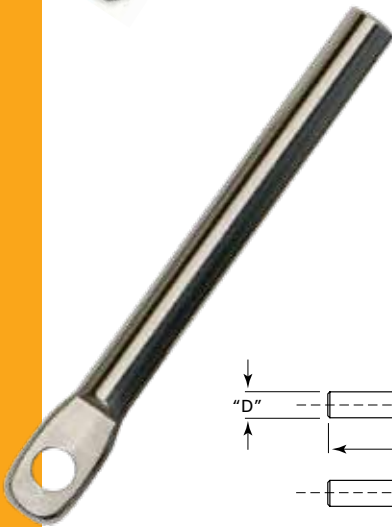
Invisiware Extended Length Threaded Tab

Extended length, same as above except there is no need to thread the hole in your end post. Cut to desired length and secure to end post with acorn nut and thread sealant.



CABLE DIA.	PART NO.	Use with S.S. Acorn Nut*
1/8" & 3/16"	TT-6B-L	AN-3/8-24-S

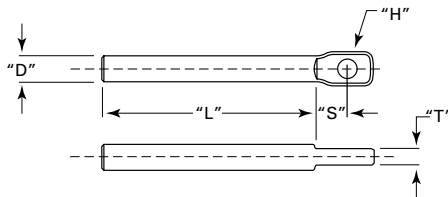
*Order Acorn Nut separately (see page 29).



Invisiware Fixed Tab

Welded into an end post to make **a strong tab for use in mounting an Adjust-A-Jaw or Adjust-A-Body tensioner, Ultra-tec Fixed Jaw, or Push-Lock fitting with threaded eye.**

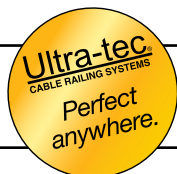
The Invisiware fixed tab is cut to length if necessary, inserted in a hole drilled through the post and welded to the outside wall. The welded surface is then ground to the original contour of the post, thus hiding the weld.



AVAILABLE IN CARBON STEEL AND STAINLESS STEEL

CABLE DIA.	PART NO.	"D"	"H"	"S"	"T"	"L"
1/8"	F-T6-5*	.375"	.265"	.44"	.233"/.229"	3.11"
3/16"	F-T6-5*	.375"	.265"	.44"	.233"/.229"	3.11"
1/4"	F-T8-5*	.562"	.390"	.68"	.295"/.285"	3.00"

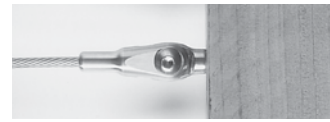
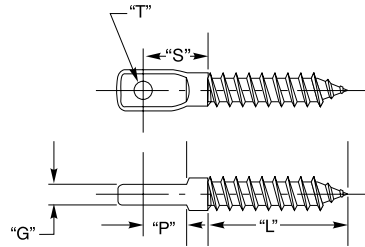
*Specify "A" for Carbon Steel or "B" for Type 304 Stainless Steel





Ultra-tec Lag Eye

A convenient, easy-to-install means for attaching an Adjust-A-Jaw or Adjust-A-Body tensioner, Ultra-tec Fixed Jaw, or Push-Lock fitting with threaded eye to a wood post.



Post with an Ultra-tec® Fixed Jaw attached.

Ultra-tec Lag Eyes are made of Type 316 stainless steel.

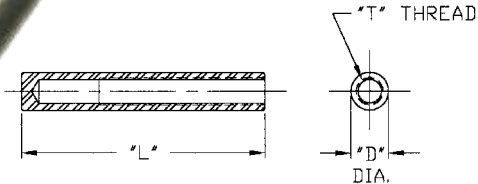
CABLE DIA.	PART NO.	"G"	"T"	"S"	"L"	"P"	DRILL SIZE REQUIRED	MIN. NOMINAL TIMBER SIZE
1/8"	LE-6	.232"/.228"	.256"	.420"	1.50"	.260"	9/32"	4x4
3/16"	LE-6	.232"/.228"	.256"	.420"	1.50"	.260"	9/32"	4x4
1/4"	LE-8	.255"/.265"	.385"	1.188"	2.00"	.688"	3/8"	4x4

Extended Length Lag Eyes with 3-inch Thread

CABLE DIA.	PART NO.	"G"	"T"	"S"	"L"	"P"	DRILL SIZE REQUIRED	MIN. NOMINAL TIMBER SIZE
1/8"	LE-6L	.232"/.228"	.256"	.420"	3.00"	.260"	9/32"	4x4
3/16"								

Invisiware Welded Receiver

A fixed end, non-tensioning device, the Invisiware welded receiver provides **a sturdy, threaded receptacle in the end post for an Invisiware swaging stud (see page 11)**. The Invisiware welded receiver is cut to length if necessary, inserted in a hole drilled through the post and welded to the outside wall. The welded surface is then ground to the original contour of the post, thus hiding the weld.



AVAILABLE IN CARBON STEEL AND STAINLESS STEEL

CABLE DIA.	PART NO.	USE WITH STUD NO.	"D"	"T"	"L"
1/8"	W-R6-5*	S-4	.437"	5/16-24	2.82"
3/16"	W-R6-5*	S-6	.437"	5/16-24	2.82"
1/4"	W-R8-5*	S-8	.531"	7/16-20	2.82"

*Specify "A" for Carbon Steel or "B" for Type 304 Stainless Steel

Mounting Screws

Stainless steel socket-head screws for mounting Adjust-A-Jaw and Adjust-A-Body with Threaded Eye tensioners, Ultra-tec Fixed Jaws, or Push-Lock fittings with threaded eye.



PART NO.	THREAD	Used with Hardware for Cable Diameters
SC-6	1/4-28	1/8", 3/16"
SC-8	3/8-24	1/4", 5/16", 3/8"

Stainless Steel Washers and Nuts



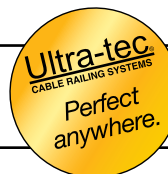
PART NO.		WASHER O.D.	WASHER I.D.	USED WITH HARDWARE FOR CABLE DIAMETERS
7/16SAE	WASHER	59/64"	15/32"	1/8" and 3/16"
1/2SAE	WASHER	1-1/16"	17/32"	1/4"
AN-3/8-24-S	ACORN NUT	Used with Extended Length Threaded Tab		

ISO 9001: 2008 Certified / U.S.A. Manufacturer

29
4/1/14

866.830.3021 • Fax 866.712.1198
520 Stonehaven Dr. • Fayetteville, GA 30215
E-mail: brian@southeastdistributors.com
Website: www.southeastdistributors.com

G&F Southeast
Distributors, Inc.



Ultra-tec®
CABLE RAILING SYSTEMS

Cable Grommets



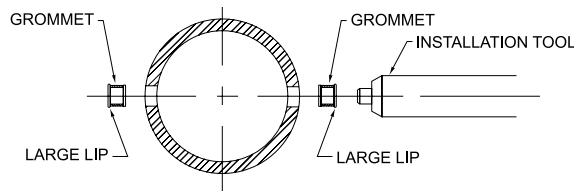
Cable grommets are offered for popular cable diameters of 1/8", 3/16" and 1/4". **They help prevent rust in exterior applications or elsewhere where moisture is a factor**, by providing a barrier between the cable and the painted or powder-coated surface through which the cable is drawn when being installed. Ultra-tec cable grommets are installed (after the paint or powder coating is applied) into holes in intermediate posts, cable braces and, in the case of the Invisiware radius ferrule, Push-Lock, and Pull-Lock fittings into the end post holes through which the cable exits. They are offered in black UV resistant Delrin®.

Delrin® is a registered trademark of E. I. DuPont de Nemours & Co.

Order cable grommets by diameter of cable and post through which the cable will be drawn.

CABLE DIA.	INTERMEDIATE POST MATERIAL (Not slotted for stairway)				INTERMEDIATE POST MATERIAL SLOTTED FOR STAIRWAY PITCH UP TO 37°		
	Schedule 40 1-1/4" 1-1/2" 2" PIPE	SQ. OR RECT. TUBE WITH .120" WALL	1/4" CABLE BRACE or SQ. OR RECT. TUBE WITH .250" WALL	1/2" FLAT BAR	Schedule 40 1-1/4" 1-1/2" 2" PIPE	SQ. OR RECT. TUBE WITH .120" WALL	1/4" CABLE BRACE or SQ. OR RECT. TUBE WITH .250" WALL
1/8" & 3/16"	G-C6-1	G-C6-2	G-C6-4	G-C6-.500	GI-C6-1	GI-C6-2	GI-C6-4
1/4"	G-C8-1	G-C8-2	G-C8-4	NA	GI-C8-1	GI-C8-2	GI-C8-4

Cable grommets are available in lots of 100 each.



CABLE DIA.	END POST MATERIAL USING RADIUS FERRULE, PUSH-LOCK or PULL-LOCK FITTINGS	
	Schedule 80 1-1/4", 1-1/2" or 2" PIPE	SQ. OR RECT. TUBE with .250" WALL*
1/8" & 3/16"	G-C6-3	G-C6-4
1/4"	G-C8-3	G-C8-4

*Cable grommets not required with 1-1/4" pipe counterbored for use with 1-1/2" Push-/Pull-Locks, or with 2" or 3" tube if using like-length Push-/Pull-Locks.

Cable

Sizes offered. Five sizes of cable are offered for the Ultra-tec Cable Railing System: 1/8", 3/16", 1/4", 5/16" and 3/8".

Cable construction. For most applications, we recommend 1x19 construction, type 316 stainless steel cable. 1x19 construction cable is engineered to hold static loads without stretching, and it is relatively stiff. Other cable constructions can be used, such as 7x7 or 7x19, but they are rarely recommended because of their elevated levels of stretch and lower breaking strengths in comparison to 1x19 construction (see chart below).

Swaging — attaching fittings to cable.

Our swageless fittings do not require swaging, since the hardware is attached to the cable by hand. Other Ultra-tec hardware is swaged using hydraulic presses that apply up to 55 tons of pressure to swage the fittings. Ultra-tec portable swagers are available for purchase or rent, or in many cases the factory can supply cable with fittings attached. It is worth noting that fittings

cannot be successfully swaged onto 1x19 construction cable using hand swagers offered by others. In those instances, less desirable constructions must be used. That is never the case with Ultra-tec hardware.

Cable coating. Cable can be special ordered with a PVC coating in any standard (PMS) color. PVC coated cable is not shown in our Design and Fabrication Guide for Metal Framed Railings, so special caution should be used if you are considering coated cable because hole specifications for frame components can change and, in some cases, special hardware may be required. If you are interested in using coated cable, please contact the factory for any necessary special hardware or design specifications.



MINIMUM BREAKING STRENGTHS (in Lbs.) FOR TYPE 316 STAINLESS STEEL CABLE

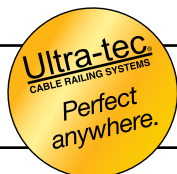
CABLE DIA.	1x19	7x7	7x19
1/8"	1,780	1,360	1,300
3/16"	4,000	3,300	2,900
1/4"	6,900	5,500	4,900
5/16"	10,600	7,600	7,600
3/8"	14,800	11,700	11,000



30
4/1/14

ISO 9001: 2008 Certified / U.S.A. Manufacturer

Ultra-tec
CABLE RAILING SYSTEMS



G&F Southeast
Distributors, Inc.

866.830.3021 • Fax 866.712.1198
520 Stonehaven Dr. • Fayetteville, GA 30215
E-mail: brian@southeastdistributors.com
Website: www.southeastdistributors.com